

054384

RECEIVED
LARAMIE COUNTY
CHEYENNE, WY.

CERTIFIED LAND CORNER RECORDATION

'89 FEB 21 PM 1 10

DESCRIPTION OF CORNER EVIDENCE FOUND, AND ORIGINAL RECORD (if known)

1/4
S.11 S.12
T.14N., R.70W.
6th P.M.

Found G.L.O. Brass Cap stamped as shown below, projecting 0.7' above ground.

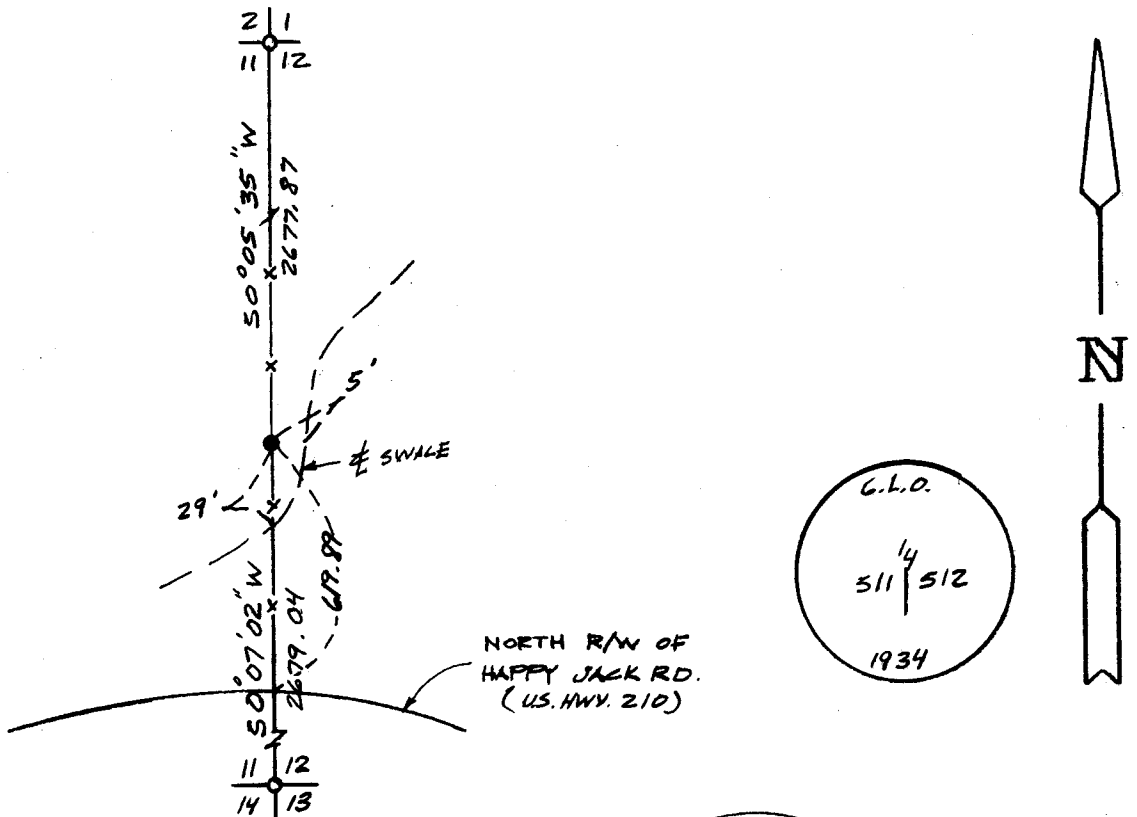
G.L.O. Record: Set 1" diameter x 3' long iron post, 27" in ground with Brass Cap marked as shown below.

DESCRIPTION OF MONUMENT AND ACCESSORIES ESTABLISHED TO PERPETUATE THE ORIGINAL LOCATION OF THIS CORNER:

At the corner: Not remonumented.

Accessories : See ties below.

SKETCH, WITH COURSE AND DISTANCE TO ADJACENT CORNER IF DETERMINED IN THIS SURVEY. (May Sketch or Paste Reproduction on Reverse Side.)



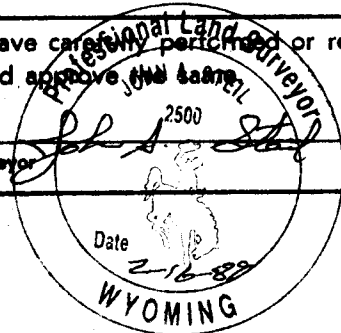
I, John A. Steil certify that I have carefully performed or reviewed the work done on the diagrammed corner as reported on this recordation form and approve the same.

Signature of Surveyor

L.S. 2500

Registration No.

STATE OF WYOMING,
Office of Clerk and Recorder,
County of _____



This "corner record" was filed for record on the _____ day of _____, 19____, was noted on the cross-index plat and is assigned page No. _____, in book No. _____.

John A. Steil
County Clerk

Cross Index No.	G-21	T.	14N	R.	70W	Mer.	6th
_____	_____	_____	_____	_____	_____	Mer.	_____
_____	_____	_____	_____	_____	_____	Mer.	_____
_____	_____	_____	_____	_____	_____	Mer.	_____
_____	_____	_____	_____	_____	_____	Mer.	_____
_____	_____	_____	_____	_____	_____	Mer.	_____
_____	_____	_____	_____	_____	_____	Mer.	_____